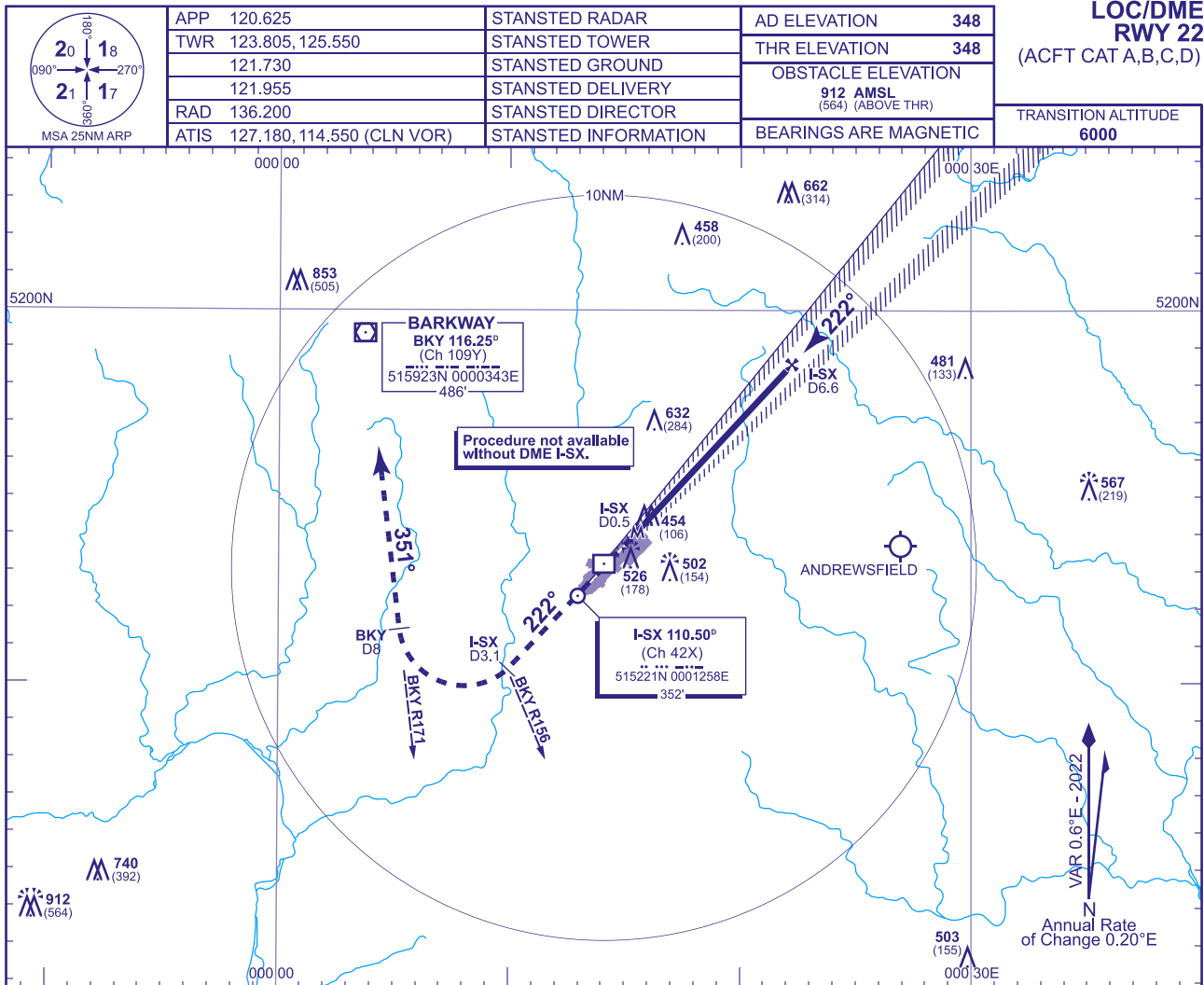
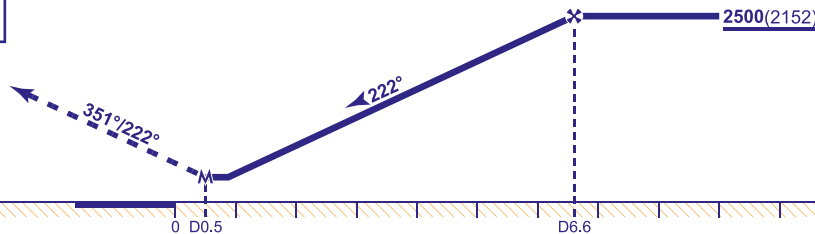


**LONDON STANSTED**  
**LOC/DME**  
**RWY 22**  
(ACFT CAT A,B,C,D)



RECOMMENDED PROFILE Gradient 5.24%, 319FT/NM					
DME I-SX	6	5	4	3	2
ALT(HGT)	2310(1962)	1990(1642)	1670(1322)	1350(1002)	1030(682)

Climb straight ahead **not above 3000**.  
At **I-SX DME 3.1 (VOR BKY R156)** turn  
right to establish on **VOR BKY R171**  
(QDM 351°) by **BKY DME 8** continuing  
climb as necessary to **BKY VOR** at  
**3000** or as directed.



Aircraft Category		A	B	C	D	Rate of descent	G/S KT	160	140	120	100	80
OCA (OCH)	Procedure	740(392)	740(392)	740(392)	740(392)		FT/MIN	850	740	640	530	420
VM(C)OCA (OCH AAL)	Total Area	900(552)	900(552)	1030(682)	1040(692)							

**AIRCRAFT UNABLE TO RECEIVE VOR DME BKY**  
Advise ATC. Radar direction will be passed for missed approach procedure.

**NOTE** 1 For initial approaches see AD 2-EGSS-7-17.  
2 MAX 185KIAS for MAP until established on BKY R171.

**CHANGE (2/25):** PANSHANGER DISUSED AD REMOVED.

AD 2-EGSS-8-6